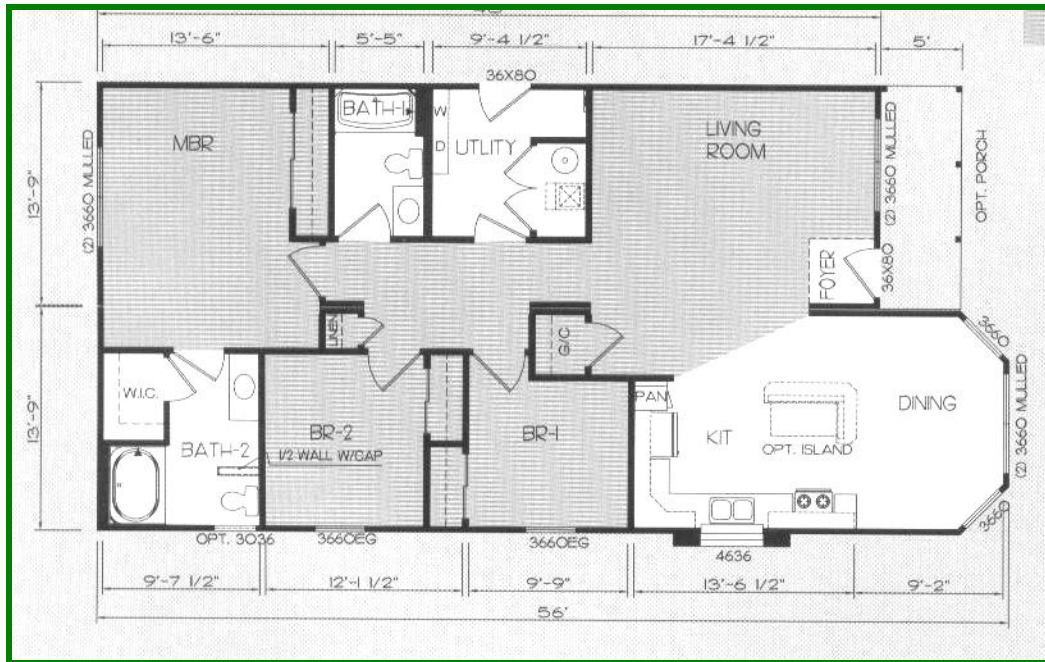


Grayling Manufactured Housing Inc.

4476 M-72 West
 Grayling, MI 49738
 1-800-355-5488 ~or~ 989-348-5488
 www.graylingmfghousing.net



MODEL # S3650 STERLING BOCA CODE HOME 1426 Sq. Ft.

OPTIONS SHOWN IN THIS HOME

- 1) BUILDERS PACKAGE (OMITTED TRANSOMS)- \$1995
- 2) TREVISO FAUCET- \$100
- 3) LEVER DOOR KNOBS T/O- \$180
- 4) 3 DH VINYL WINDOWS(LR-2/BTH2-1)- \$705
- 5) DOUBLE HUNG WINDOWS T/O- \$770
- 6) PALM DESERT CARPET T/O- \$532
- 7) LAMINATE "CASTLE OAK" FLOORING- \$1586
- 8) 2X6 SIDEWALLS 16" OC- \$1040
- 9) BULLNOSE DRYWALL CORNERS- \$100
- 10) FOYER LITE- \$35
- 11) 2 ISLAND PENDANT LIGHTS- \$180
- 12) CEILING LIGHTS- ALL BR'S- \$75
- 13) STAINLESS STEEL GAS APPLIANCE PKG.- \$2125
- 14) STAGGERED MAPLE RAISED PANEL CABINETRY-\$1495
- 15) KITCHEN ISLAND WITH SNACK BAR- \$295
- 16) CERAMIC BACKSPLASH- KITCHEN- \$125
- 17) CERAMIC BACKSPLASH- BATH 2- \$45
- 18) MAPLE KITCHEN BEVELED EDGE- \$105
- 19) MAPLE BATH BEVELED EDGE (BTH1/BTH2)- \$70
- 20) MODULAR DRAPERY PKG.- \$595
- 21) 13'9" x 5 PORCH- \$1835

TOTAL OPTIONS IN THIS HOME:	\$13,988
BASE COST ON AN S3650:	\$ 64,720
	\$78,708
Clearance Discount:	<u>-3,000</u>
(Home priced @ Dealer's cost)	\$75,708

**SEE SALES REPRESENTATIVE
 FOR STERLING PACKAGE PRICES
 & PRICE ON THIS MODEL**



**BASE PRICE INCLUDES: STANDARD COST OF HOME,
 SALES TAX, DELIVERY, SET-UP AND SIDING/TRIM
 OUT.**